

MITI ONE

OGUZ MARIN | MITI NAVI 34 | 2021





MITI ONE OGUZ MARIN - MITI NAVI 34 - 34m/112ft

MITI ONE

Designed for and with an experienced sailor and knowledgeable yacht owner, the sailing yacht Miti One was built in high grade steel by renown Oguz Marin shipyard in Bodrum and delivered in June 2021 as a unique, fully custom sailing yacht, perfectly combining the pleasure of pure sailing and the comfort of a large and modern luxury yacht.

Commercially registered under the Malta flag and built according to the Rina classification for long range navigation, S/Y Miti One is already a very successful charter yacht which has just been launched from the shipyard after finalising her last warranty works.

This wide and cozy cruising sailing yacht with very modern design offers an impressive interior volume of 198 GT with a very clever layout and interior arrangement. Her main saloon hosts a 10 guests dining table, a lounge area and a fully equipped bar. She can accommodate up to 11 guests in 5 luxury cabins, including a vast Master cabin with ensuite bathroom, 3 VIP cabins and 1 Twin.

On her 8.4m wide aft deck, a huge sunbed overlooks a wonderful "al fresco" dining area for up to 12 guests, while the fore

deck also offers an attractive sunbed with an amazing 180° sea view.

A 3.5m bowsprit adds style to her elegant design, while improving her sailing performance.

S/Y Miti One has a "Ketch" rigging with 2 tall aluminium masts. Her main mast of 30m and the mizen mast of 23m, together can display a total of 520m² of Prisma sails.

Thanks to her hull design and 3.55m draft, S/Y Miti One is a very stable and seaworthy yacht, ensuring great comfort to her guests while navigating or at anchor.

Equipped with 2x Baudoin diesel engines of 450hp each, this very economical and eco-friendly yacht can reach a top speed of 13 knots and can cruise smoothly at 9 knots, burning only 64 liters per hour and allowing a range of

2,000 nautical miles. Her flexible solar panels laying on the hard-top and roof can provide 5kw and a Hamman sewage treatment system helps her respect even more the environment and her guests' well-being.

Designed and built to provide maximum pleasure and fun to her guests, S/Y Miti One owns a powerful 5.2m tender capable of towing water-skiers, wakeboarders and the many towable toys available on board.

Many other toys, including 2 Yamaha Seawing II and 2 paddle board are offered to the guests.

Presented in immaculate condition and offered at a very attractive price, S/Y Miti One is definitely the best choice for sensible sailing lovers who demands the highest safety and comfort and care about elegance and style.









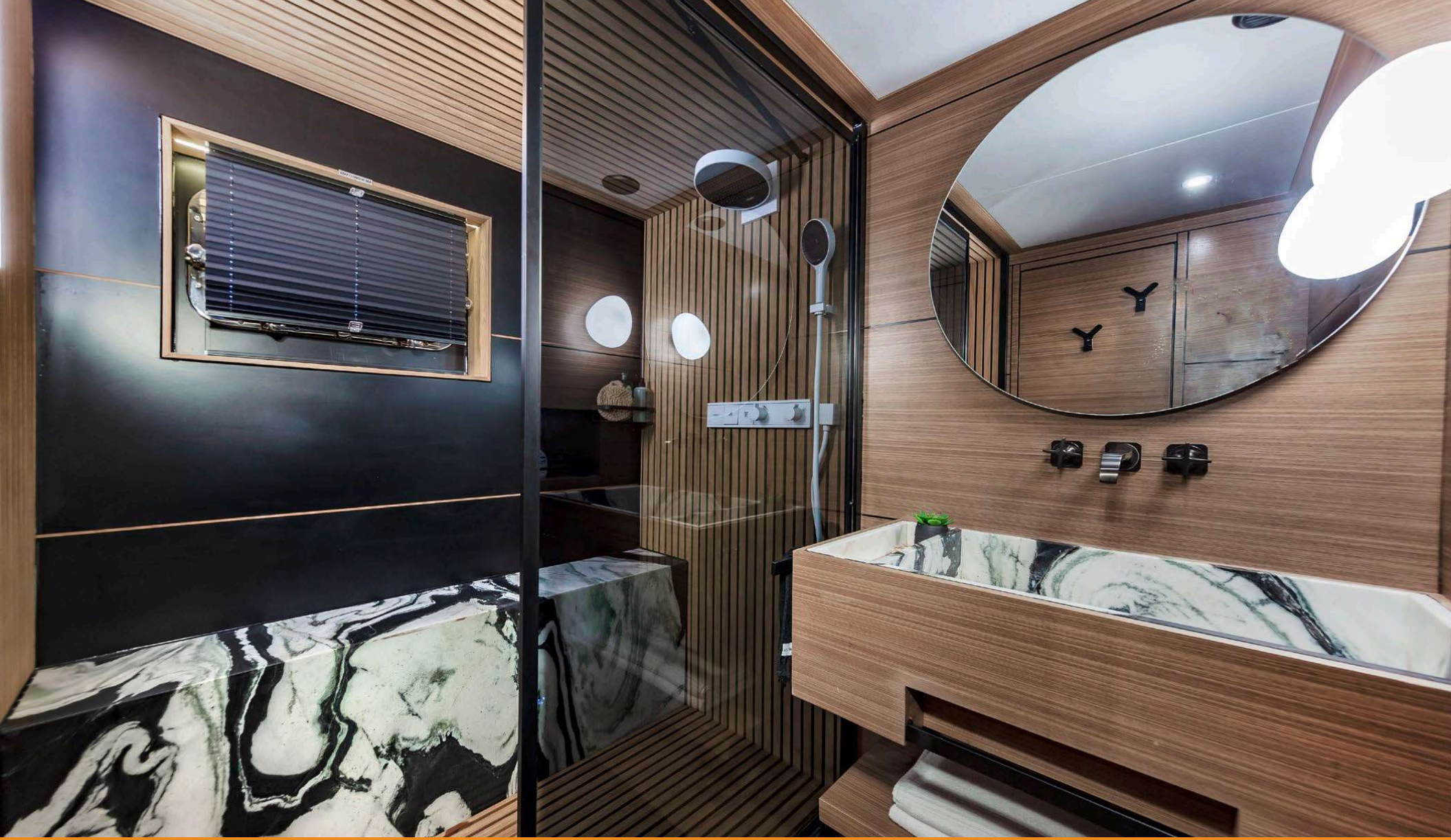












MITI ONE MITI NAVI 34 - Master's large ensuite Bathroom







M/Y MITI ONE
can accommodate up to
11 guests in 5 luxury cabins,
including a vast Master cabin
with ensuite bathroom,
3 VIP cabins and 1 Twin.





MAIN SPECIFICATIONS

BUILDER/MODEL
OGUZ MARIN
Miti Navi 34

YEAR BUILT
2021

FLAG
Malta

LENGTH
34m (111'7")

BEAM
8.40m (27'7")

DRAFT
3.55m (11'8")

YACHT TYPE
Cruising Sailing Yacht

VOLUME
198 GT

CONST. MATERIAL
Steel

ENGINES
2x Baudoin P2 Heavy Duty
(450hp each)

GENERATORS
2x Kohler
(45kw each)

ENGINE HOURS
Port 649
Stb 647

GENERATOR HOURS
Port 1422
Stb 1424

STATEROOMS
5 cabins
11 guests

CREW
4 cabins
6 crew

LOCATION
Bodrum
(Turkey)

RIGGING: Ketch: 2 aluminium masts
(30m main + 23m mizen) + 520m² sails (Prisma)



ADDITIONAL SPECIFICATIONS

TOP SPEED

13 knots

CRUISING SPEED

9 knots

CONSUMPTION AT 9 KNOTS

64L/hour

RANGE AT 9 KNOTS

2,000 Miles

FUEL CAPACITY

14,900L (3936 Gallons)

WATER CAPACITY

7600L (2008 Gallons)

BLACK WATER CAPACITY

2450L (647 Gallons)

GREY WATER CAPACITY

7000L (1849 Gallons)

OTHER FEATURES

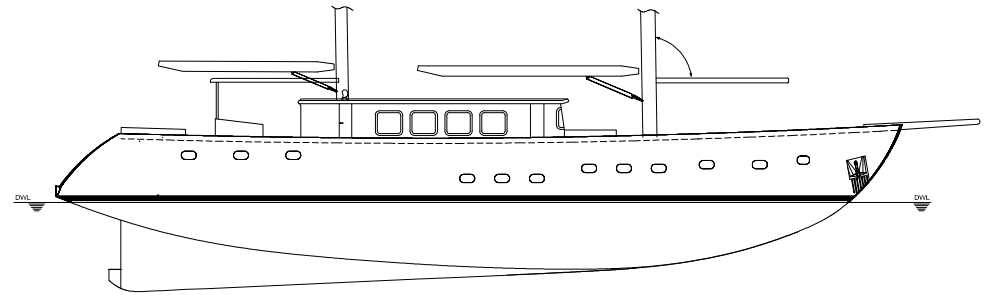
Solar panels
(total power of 4.5kw)
Hydraulic swim ladder

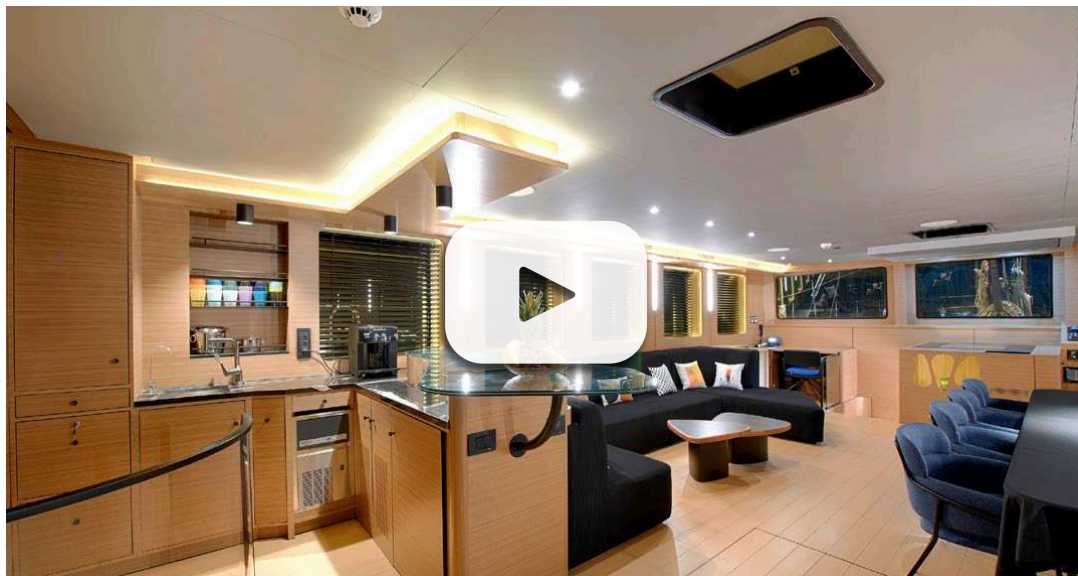
PILOT STATIONS

2x Bridges
(main + exterior bridge)

TENDER & TOYS

5.2m Highfiled tender with 90hp outboard
2x Yamaha Seawing II
2x Paddle boards
Water Ski / Wake Board equipment
Towable Tubbing
Snorkeling Gear





CLICK TO SEE THE
PRESENTATION VIDEO



CLICK TO SEE THE
PRESENTATION VIDEO

HER MAIN KEY POINTS ARE:

- 5 luxury cabins for up to 11 guests
- Huge interior volume of 198 GT
- Rina classification “unrestricted”
+ Malta flag commercial
- Economical engines + Solar panels
- Large sunbeds on aft and fore decks
+ 12 guests dining tables.

